



HÖLVIA

- yhdistävä tekijä -

PACKAGE FOR NEW SUPPLIER CANDIDATES

WHO ARE WE?

Holvía is a strategic partner in your company's procurement and sourcing operations. We connect the best engineering services in the industry with our customer requirements and do this at a competitive price. By centralizing your sourcing with us, you save valuable time and achieve significant cost savings. We ensure the quality of the products and make sure that your orders reach their destination quickly and reliably.

Holvía – the factor that connects your requirements with the best experts in the field.

WHO ARE WE?

Our network

Our expertise is complemented by an international network of companies specializing in various services. Versatility helps us to better meet the needs of our customers, which is why we are also actively developing and expanding our network. We carefully select each of our partners so that we can guarantee the quality of both our products and our operations to our customers.

In addition to customer orders, we offer our partner companies physical work space in Hollola in Lahti and help them grow networked together with other players in the industry. We also work closely with educational institutions in the area.

OUR SERVICES

SUBCONTRACTING- AND CONTRACT MANUFACTURING

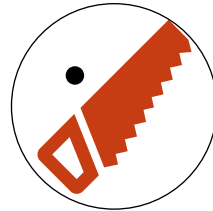
- Machine building
- Serial production
- Project manufacturing
- Sourcing as a Service

INDUSTRIES

WE WORK WITH MANY INDUSTRIES TO BRING BALANCE FOR SEASONAL CHANGES WITHIN THE INDUSTRIES



Marine



Renewable energy



Construction



Sawmill



Mining

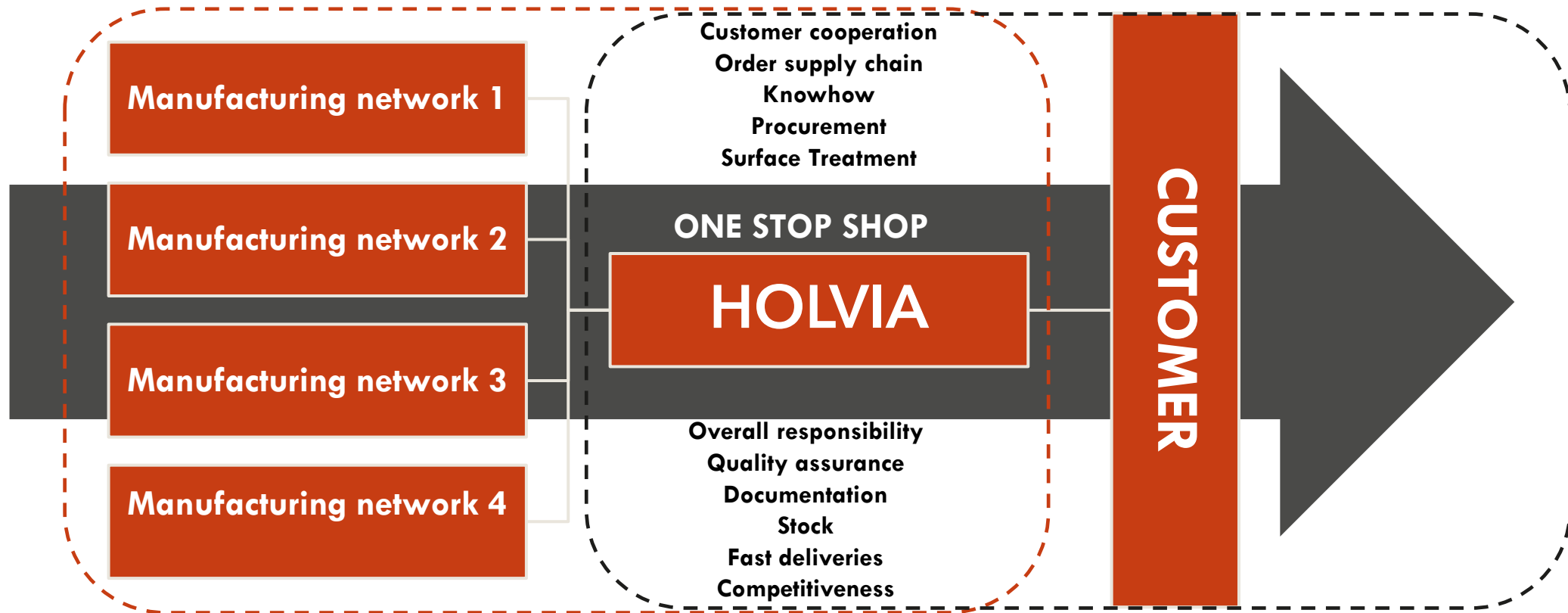


**Transportation and
material handling**

HYBRIDMODEL

ORDER - DELIVERY PROCESS

HOLVIA HYBRIDIMODEL AS A HUB TO BRING BEST BENEFITS
FOR COOPERATION BOTH WAYS



WHAT WE ARE LOOKING?

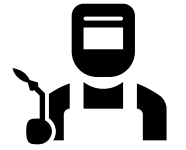


WE ARE LOOKING FOR:

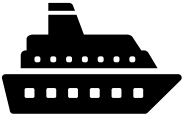
- **High-quality and cost-efficient partner in engineering workshop and procurement operations for demanding mass production and (or) project manufacturing.**
- **Correctly timed and swift deliveries.**
- **Longtime partners to develop mutual profitable business.**

WE EXPECT:

- **Reliability**
- **Good and open communication.**
- **Good customer service.**
- **Fast response time.**
- **Desire to evolve and develop partnership.**
- **Quality required by customers.**
- **Decent communication in English.**



WHAT WE CAN OFFER?

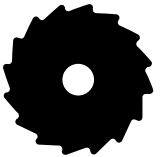


WE CAN OFFER:

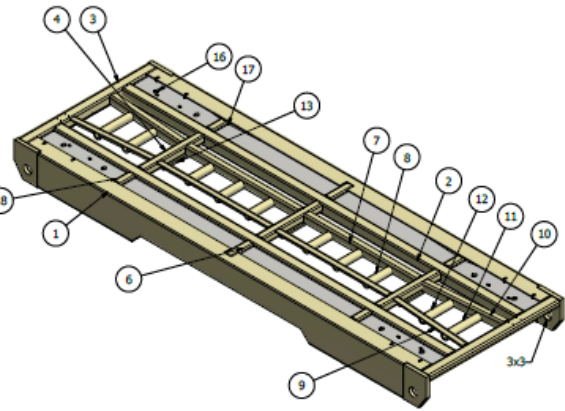
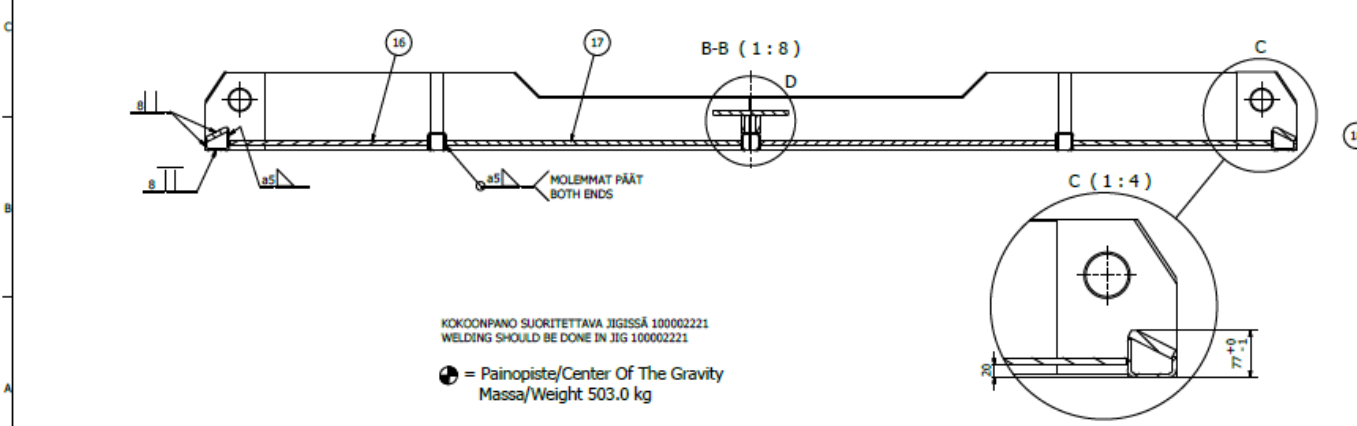
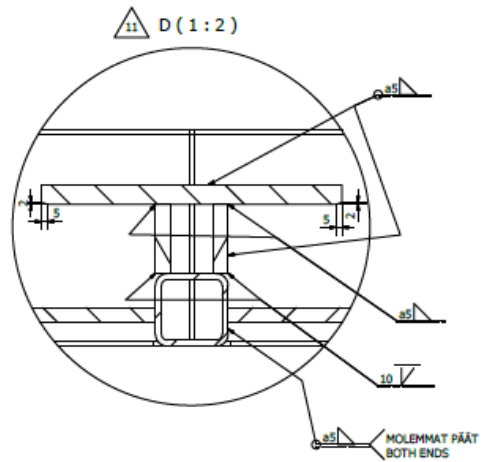
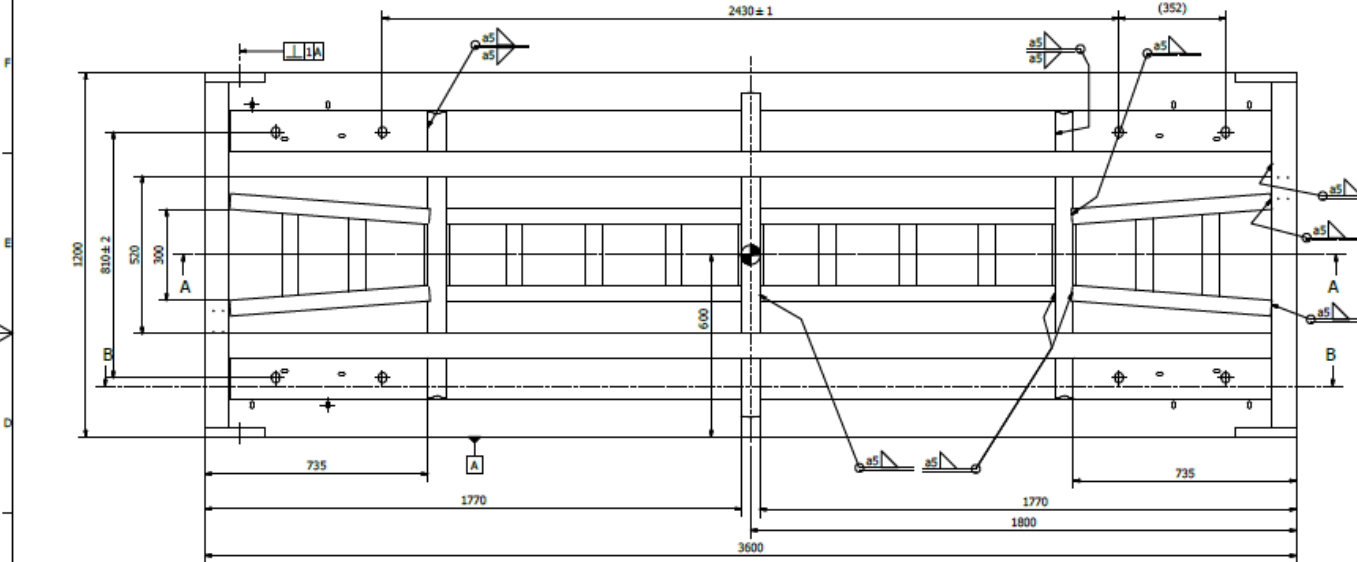
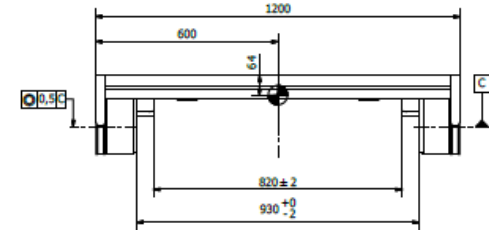
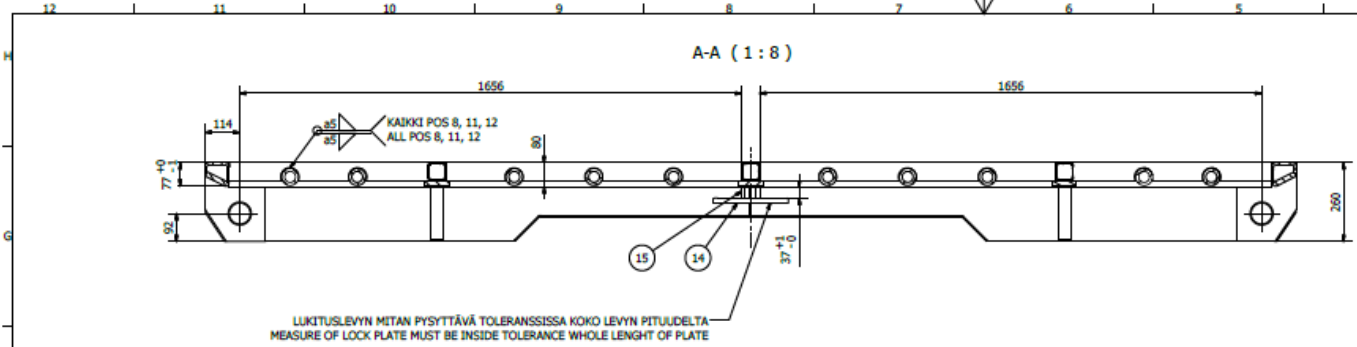
- **Small series production and project delivery production structures and parts.**
- **100 000 – 300 000 € of annual purchases depending on production capabilities.**
- **Longtime partnership.**
- **Deliveries with Holvia Group to leading technology companies in Finland.**
- **Know how from industries like mining, marine, transportation, sawmill.**

TYPES OF STRUCTURES:

- **PROJECT:**
 - **Railings,, RHS-structures, machineframes, conveyors etc.**
- **SMALL SERIES:**
 - **Vechile frames, cabins, tailmodules, cassettebases, sheetmetal parts**
- **LARGER SERIAL PRODUCTION**
 - **Sheet metal parts, conveyer base rollers, electric charging unit parts.**



Rev	Date	Name	Change description
11	12.3.2019	ERTTURY	NEW DETAIL ACCORD.



KOKOONPANO SUORITETTAVA JIGISSÄ 100002221
 WELDING SHOULD BE DONE IN JIG 100002221

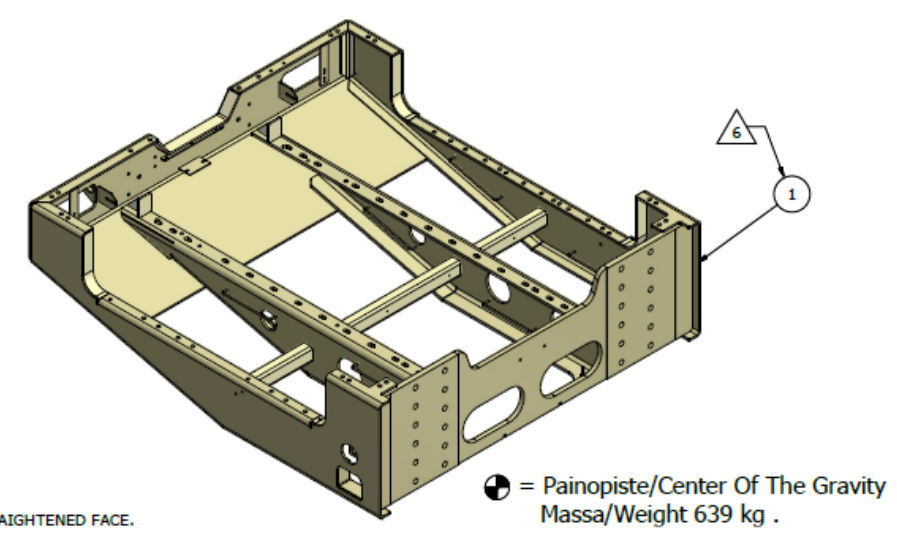
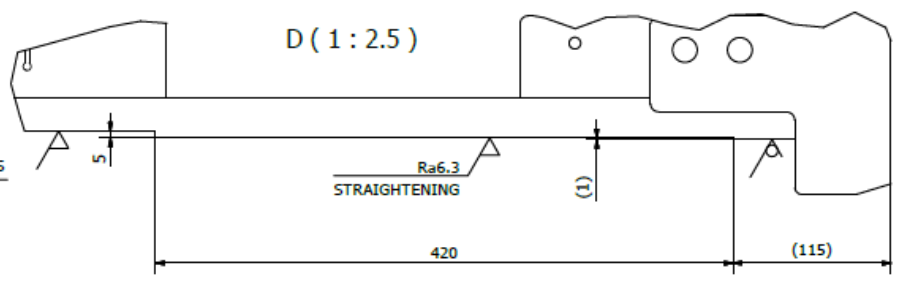
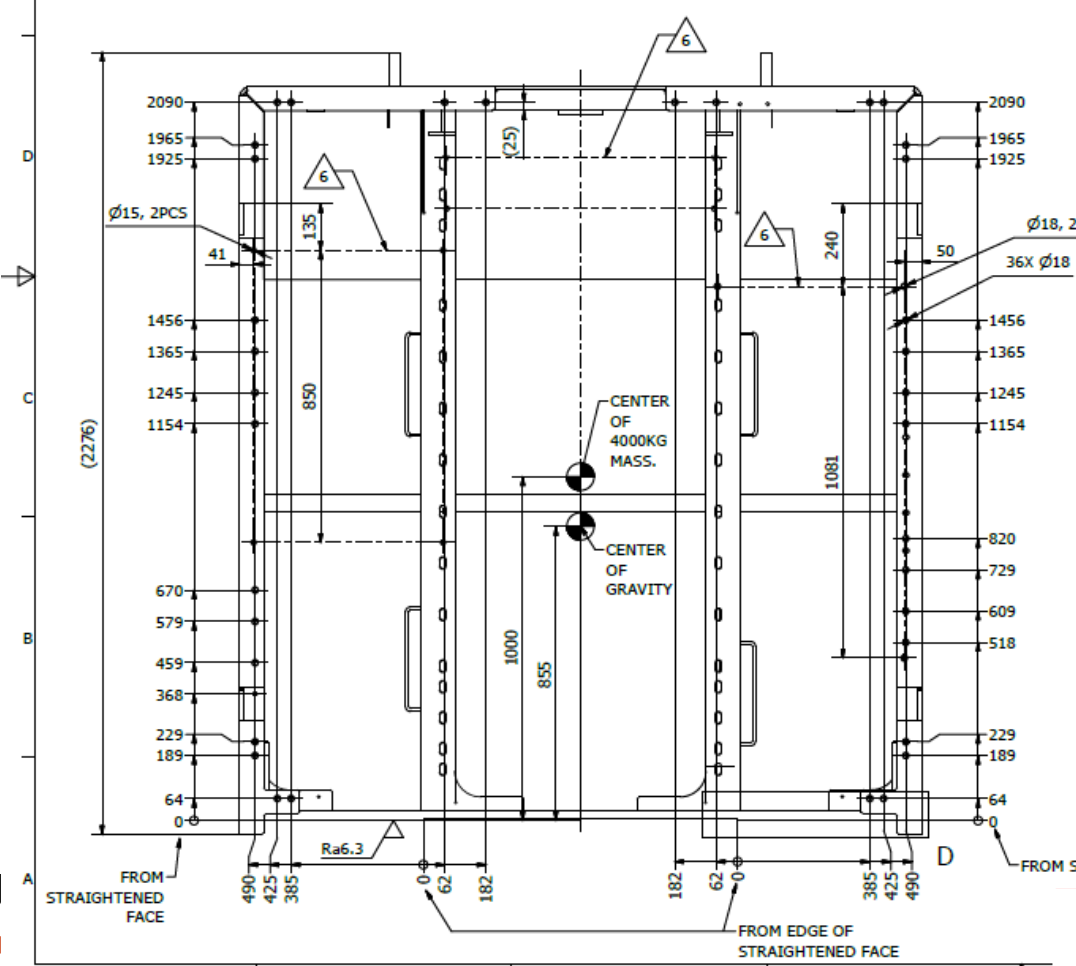
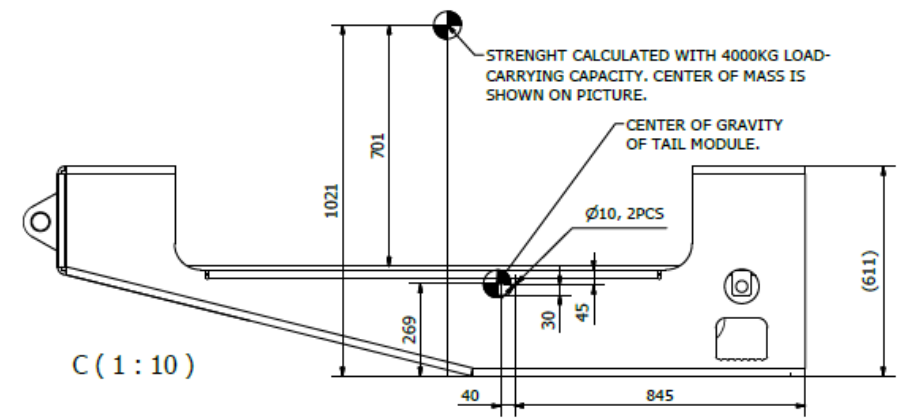
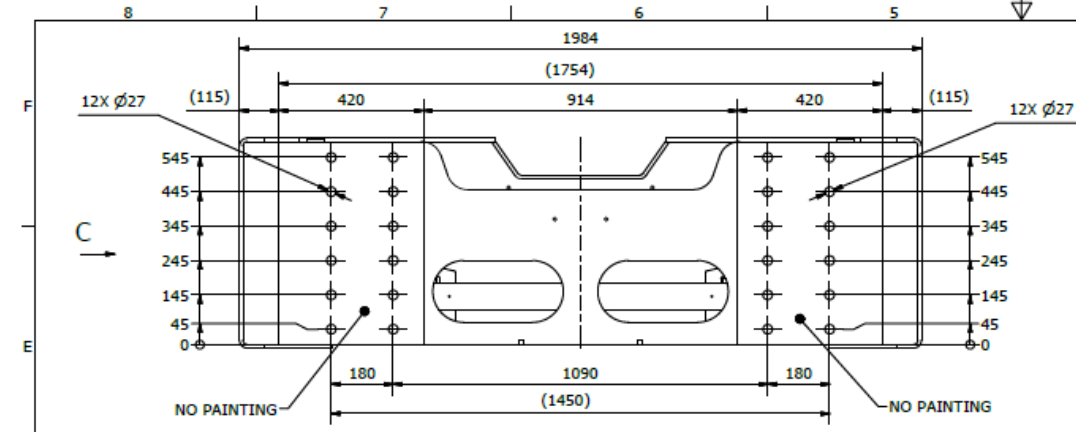
● = Painopiste/Center Of The Gravity
 Massa/Weight 503.0 kg



EXAMPLE 1

- **Material S355 materials mostly 6 mm**
- **503 kg**
- **Scope of delivery: Welding, machining, blasting.**
- **All welding spatters to be removed, no dents or cuts.**
- **Delivered to Holvia Group Oy, Hollola Finland**
- **Delivery size 10 pcs / delivery.**
- **Holvia Group can offer a welding jig.**

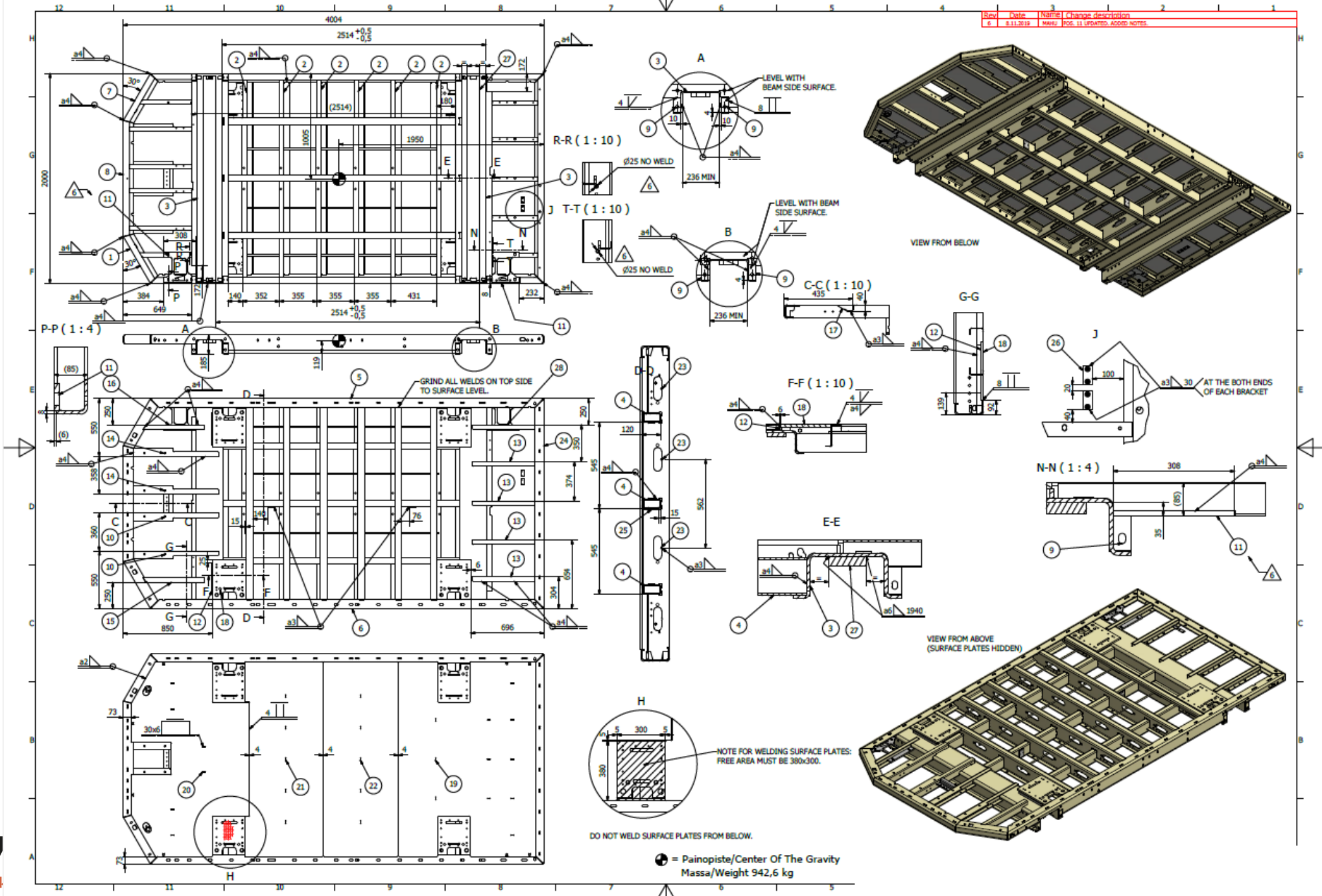
Rev	Date	Name	Change description
6	14.11.2018	ETTEKMIJ	HOLES ADDED, POS 1 UPDATED



EXAMPE 2

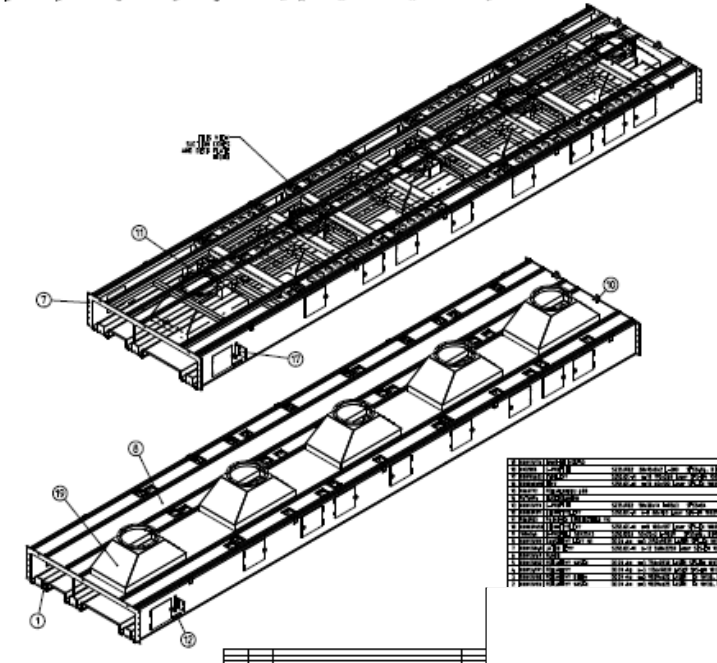
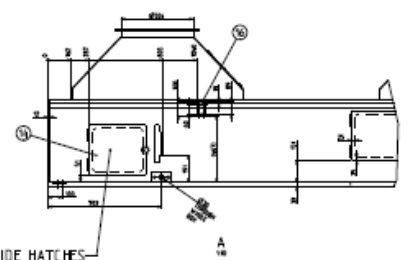
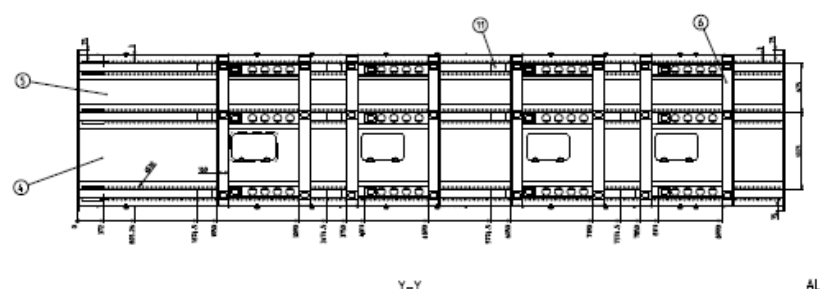
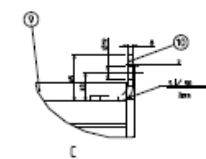
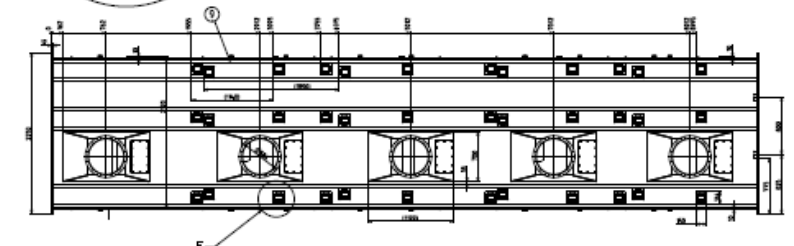
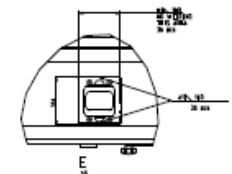
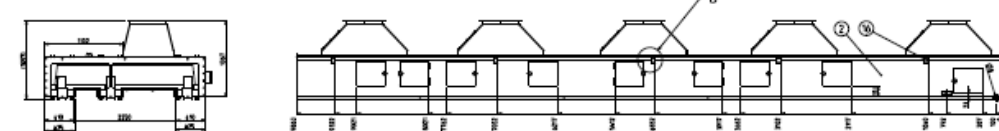
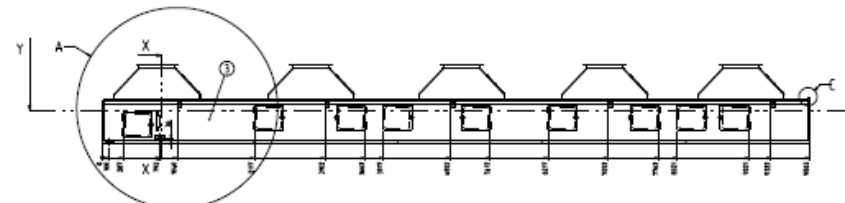
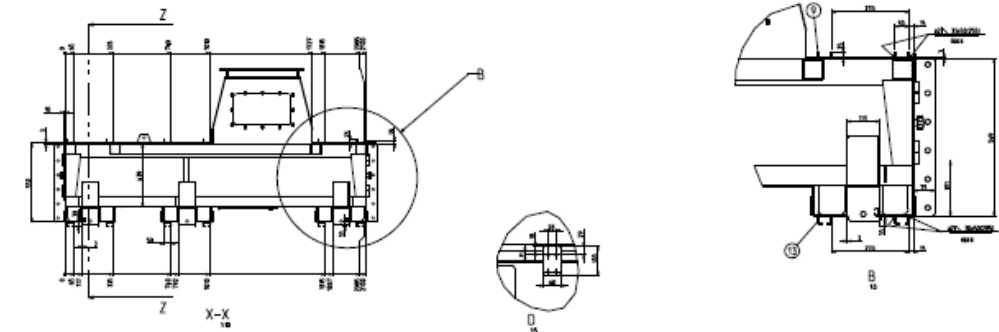
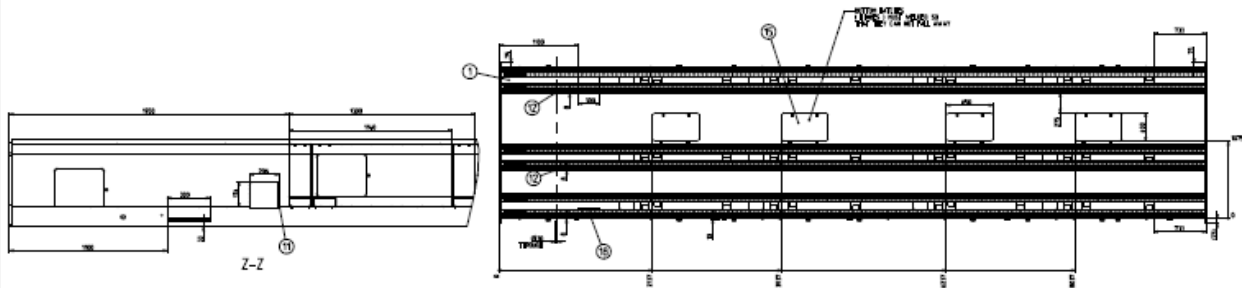
- **Material S355 materials mostly 6 mm**
- **640 kg**
- **Scope of delivery: Welding, machining, blasting.**
- **All welding spatters to be removed, no dents or cuts.**
- **Delivered to Holvia Group Oy, Hollola Finland**
- **Delivery size 10 pcs / delivery.**

Rev	Date	Närim	Change description
6	8.11.2019	MARU	POS. 11 UPDATED, ADDED NOTES.



EXAMPLE 3

- **Material S355 materials mostly 4mm**
- **942 kg**
- **Scope of delivery: Welding, machining, blasting.**
- **All welding spatters to be removed, no dents or cuts.**
- **Delivered to Holvia Group Oy, Hollola Finland**
- **Delivery size 10 pcs / delivery.**



NO	LAUSEKKEEN NIMI	MÄÄRÄ	YKSIKÖ
1
2
3
4
5
6
7
8
9
10
11
12
13
14
15
16
17
18

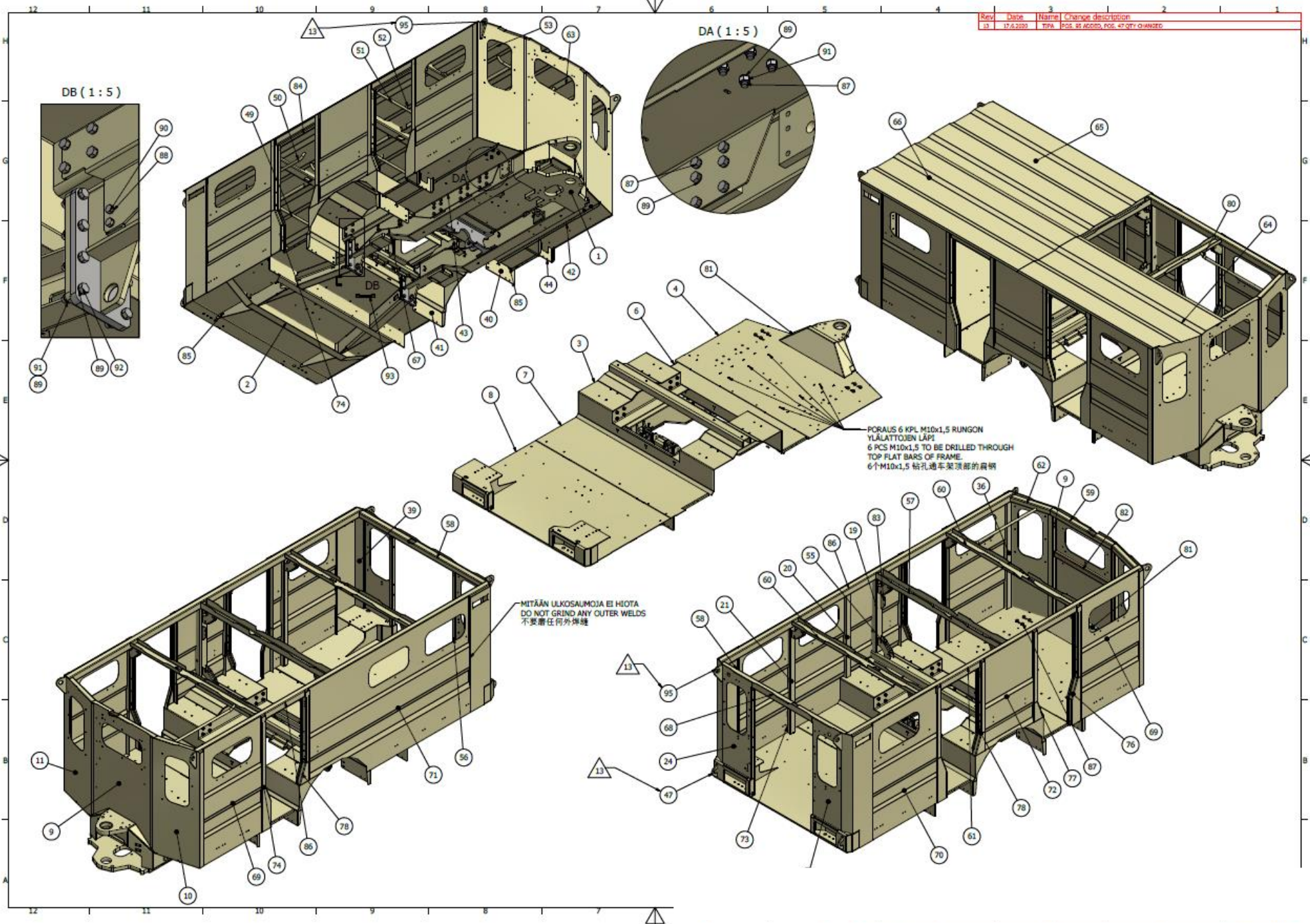
ALL SIDE HATCHES
MUST BE REMOVABLE
18 pcs

ALL DIMENSIONS IN MILLIMETERS
KÄYTTÖKÄSIKIRJAN MUKAAN
- 0,100 mm
- 0,200 mm
- 0,500 mm
- 1,000 mm
- 2,000 mm
- 5,000 mm
- 10,000 mm
- 20,000 mm
- 50,000 mm
- 100,000 mm
- 200,000 mm
- 500,000 mm
- 1,000,000 mm

EXAMPLE 4

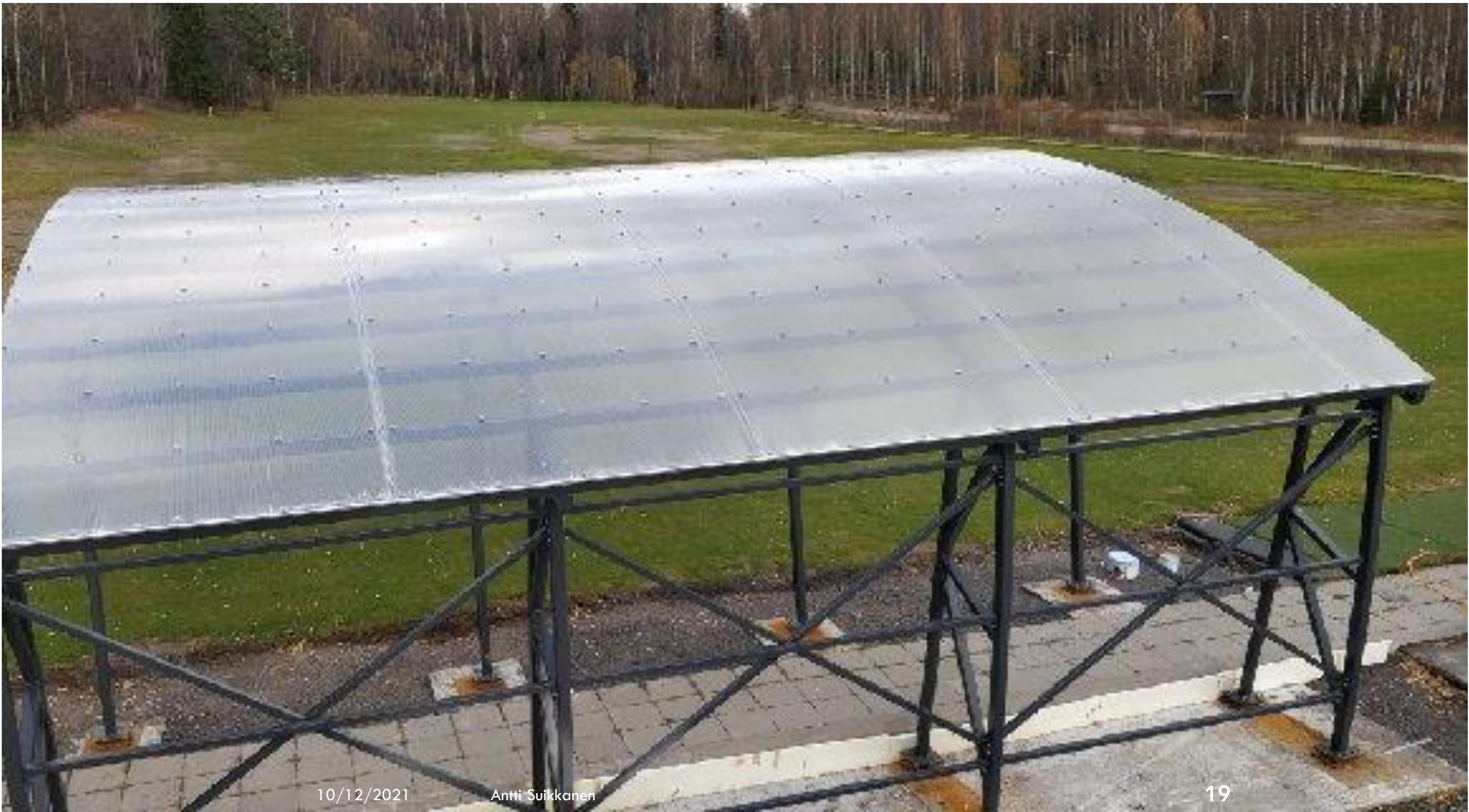
- **Material S355 / DC01 materials mostly 3 – 6 mm**
- **3500 kg.**
- **Scope of delivery: Welding**
- **All welding spatters to be removed, no dents or cuts.**
- **Delivered to Holvia Group Oy, Hollola Finland**
- **Delivery size depending on the project. Can be from 1 to 6 units.**

Rev	Date	Name	Change description
13	17.6.2020	TINA	POIS, 45 ALOITUS, POIS, 47 OVI OIKAISTU



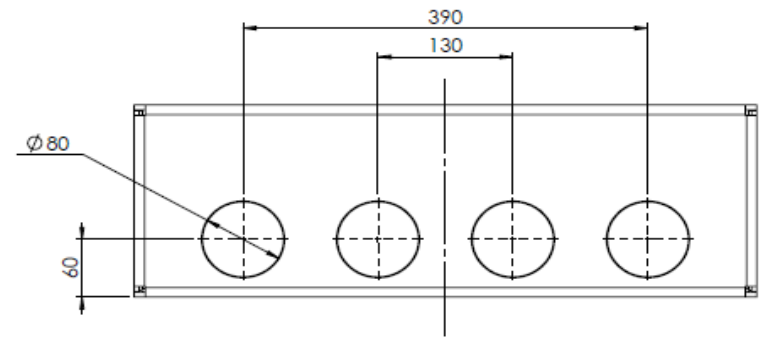
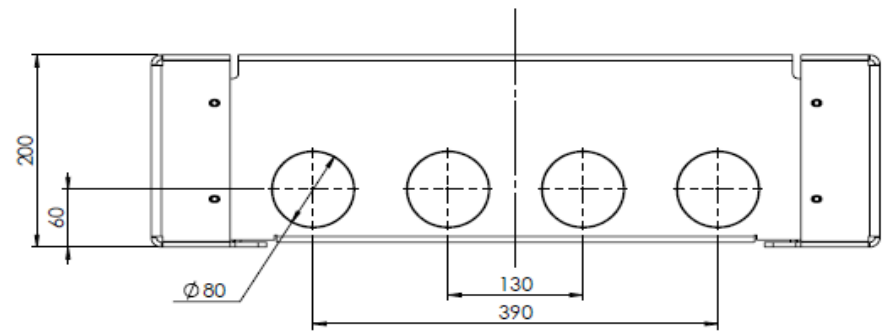
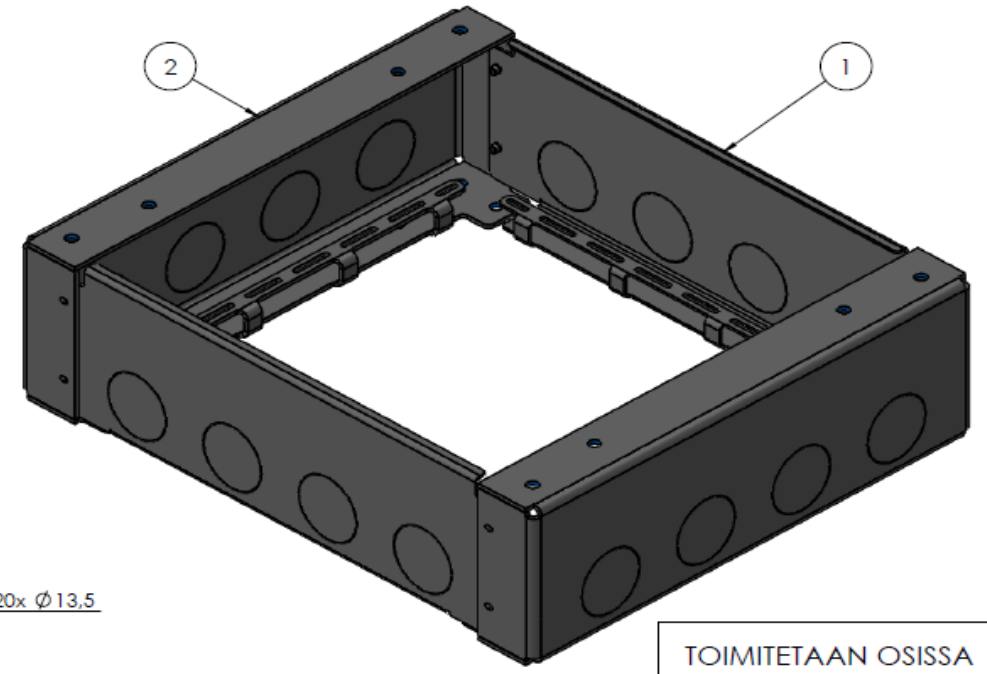
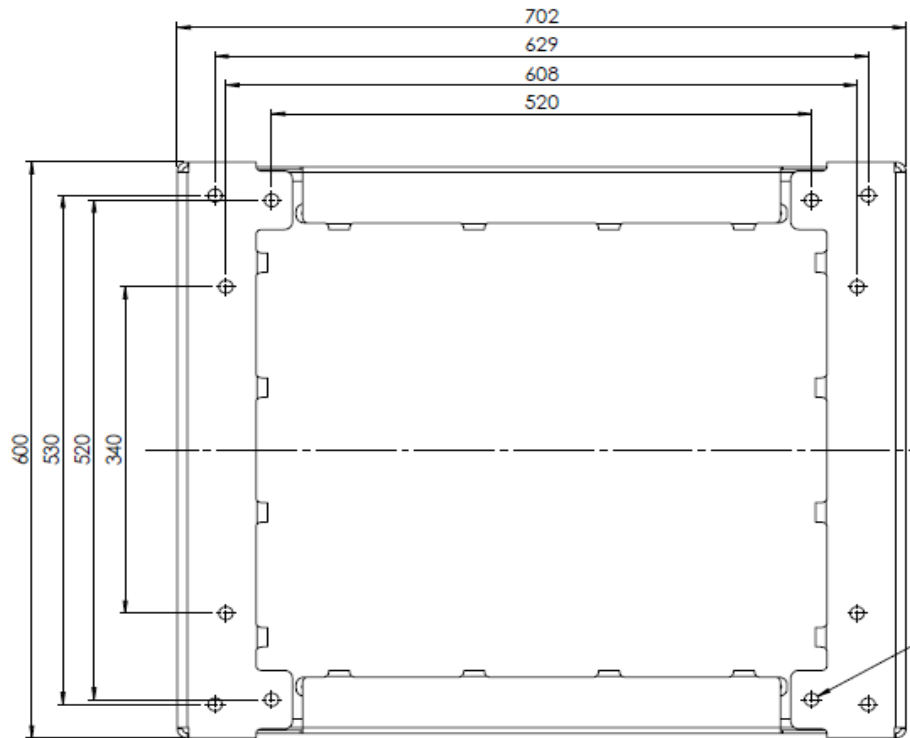
PERSONEL CARRIER UNIT

- **Material S355, materials mostly 4 -6 mm**
- **Scope of delivery: Welding, machining, blasting. Delivery in elements. Floor, roof, walls and bottom frame or whole welded cabin.**
- **All welding spatters to be removed, no dents or cuts.**
- **Delivered to Holvia Group Oy, Hollola Finland**
- **Delivery size 2-4 cabins or sets of elements (2100kg / set) / delivery.**



GOLF SHELTER

- **Material S355 / RHS mostly 50x50x3 and 100x50x3**
- **Scope of delivery: Welding, bending of the frame, blasting and painting. Assembly in Finland.**
- **Manufacturing of elements. One set of elements comes with three meters of shelter. In picture the is nine meters (three sets).**
- **Plastic roofing not included in delivery.**
- **All welding spatters to be removed, no dents or cuts.**
- **Delivered to Holvia Group Oy, Hollola Finland**
- **Delivery size 3 – 12 sets / delivery.**



No	Part	Kuvaus	Description	Qty	UOM
1		SOKKELI SIVUPELTI KP		2	each
2		SOKKELI JALKA		2	each
GENERAL TOLERANCES					
DESCRIPTION			SCALE	DESIGN	
SOKKELI			1:5	ACC.	
			SIZE	A3	WEIGHT
			ITEM CODE		kg
			REVISION		
STATUS		APPROVED	UPDATE		

SOKKELI

- **Material RST EN 1.4301 1D (2B if 1D not possible) (3mm and 5 mm thickness) Weight ~25 kg / set**
- **Scope of delivery: lasercut, bending, PEM nut installation and powder painting RAL 9005 80um.**
- **Manufacturing in parts. One set consist of four parts. Sivupeltti + jalka, 2 + 2 pcs**
- **Delivered to Holvia Group Oy, Hollola Finland**
- **Delivery size 200 – 500 sets / delivery.**
- **Total volume: year 2022 – 2000 sets, year 2023 – 5000 sets**

BASIC INFORMATION OF SUPPLIER

If you are interested, please provide us following details:

- Turnover, last 3 years
- References client or cases
- Employees white collar, blue collar
- Certificates ISO 9001 etc.
- Clients in Finland or Nordics, yes / no.
- Factory premises m2?

CONTACTS



Juha Soini

Toimitusjohtaja

CEO

+358 50 557 1024

juha.soini@holvia.fi



Antti Suikkanen

Myyntijohtaja, verkostoyhteistyö

Sales and network

+358 44 753 5637

antti.suikkanen@holvia.fi



Kimmo Tolonen

Tehtaanjohtaja

Plant director

+358 50 552 1442

kimmo.tolonen@holvia.fi